

TororoKONBU System

---

Pettan Ver5. 6. 6

# Install Guide

2013/12/20

---

TororoKONBU

**e-Sea l**

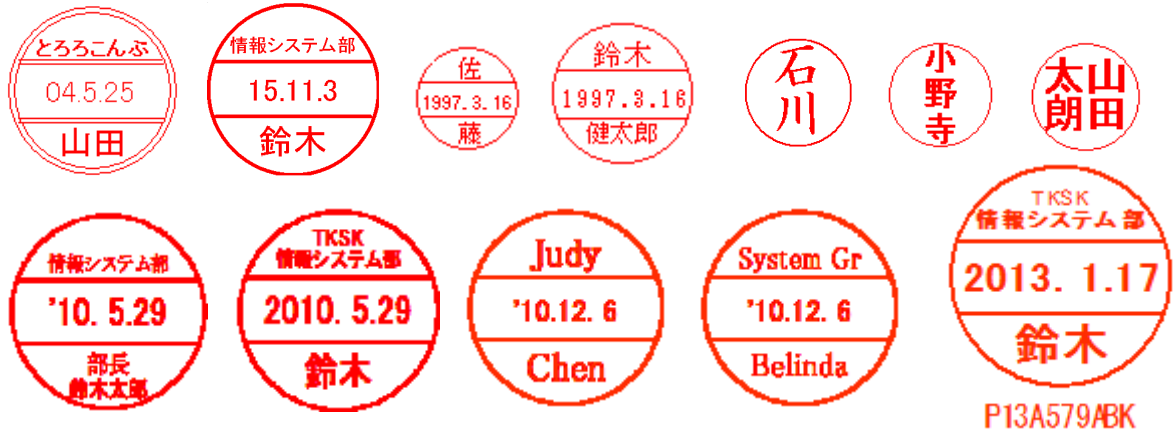
Table of contents

	Page
1. Introduction	2
1-1. OS Requirement	2
2. Install	3
2-1. Preparation of installation	3
2-2. Install	4
2-3. Install of Excel addin Macro for e-Seal menu	6

This manual is the user's guide which described the installation method of TororoKonbu e-Seal "Pettan", and the operation method.

## 1. Introduction

This software is the software which seals documents electronically and settles accounts possible electronically on a PC.



By this software, a stamp object is embedded to document using technology called OLE. For example, although the function of insertion of an object is prepared for the word-processing software of OLE correspondence of a word, Ichitaro, etc., the object of the recognition mark can be embedded into a document using it.

However, in the case of sealing, you have to enter a password.

By this password function, only those who know the password can seal no longer and electronic signature becomes possible.

At the time of sealing, affiliation of an acknowledger name, a date, and an acknowledger, a recognition item (document number), etc. are embedded at an object.

Moreover, since a recognition history is breathed out by the log file, recognition history management of a document is attained.

### 1-1. OS Requirement

This software operates on the following OS.

- ・ Windows8(x64) / 8(x86)
- ・ Windows7(x64) / 7(x86)
- ・ Windows Vista
- ・ Windows XP

## 2. Install

### 2-1. Preparation of installation

The file name is Pettan\*\*\*\*.zip, when download from on the Internet. Since it is a compressed file, please thaw. Defrosting Installer setup\_\*\*\*.exe is generated. Two or more installers may be thawed. Please choose a suitable installer.

Installer	Explanation
setup.exe	The usual installer. The installable module is as follows. 1.Pettan sealing tool (pettanin.exe) 2.Pettan management tool (Pettan manager (ptmgr.exe)) 3.Sealing log check tool (checklog.exe)
setup_nomgr.exe	The installer without a management tool. In order to maintain security, you may not want to give a management tool to the end user. The message under installation is Japanese / English auto select. Installation of those other than Japanese Windows can be performed now. The install module are as follows. 1. Pettan sealing tool (pettanin.exe)

Note) When Pettan is already installed, please back up the pettan data folder (ptdata). A setup wizard may overwrite these files.  
Keep in mind that the registered recognition mark and profile will be deleted if overwritten.

#### Installation Step

- 1.Execution of an installer
- 2.Inclusion of an Excel sealing menu add-in.

## 2-2. Install

Step1) Execute setup.exe .

Step2)

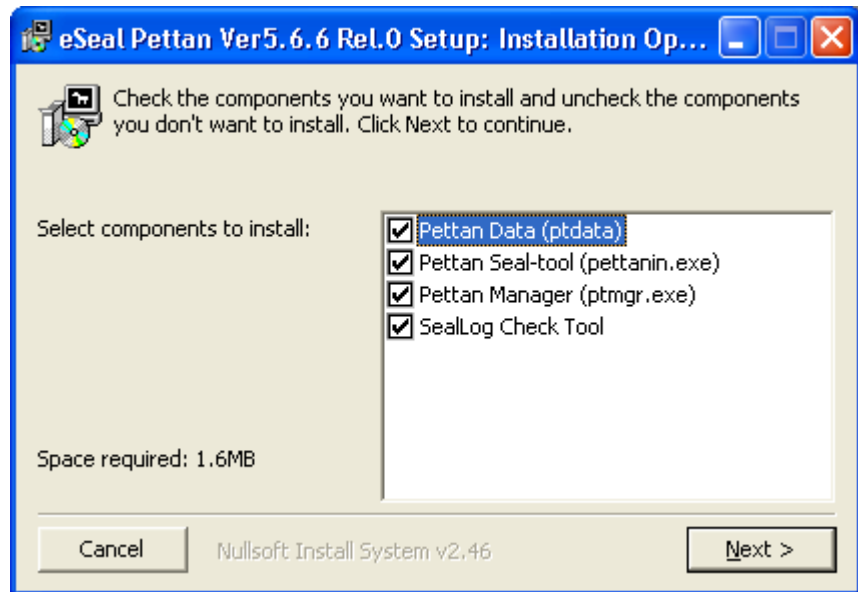
Because the message of the confirmation is displayed when the installer is started, click the button "Yes".



Step3)

Select module to install.

Click the button "Next >".



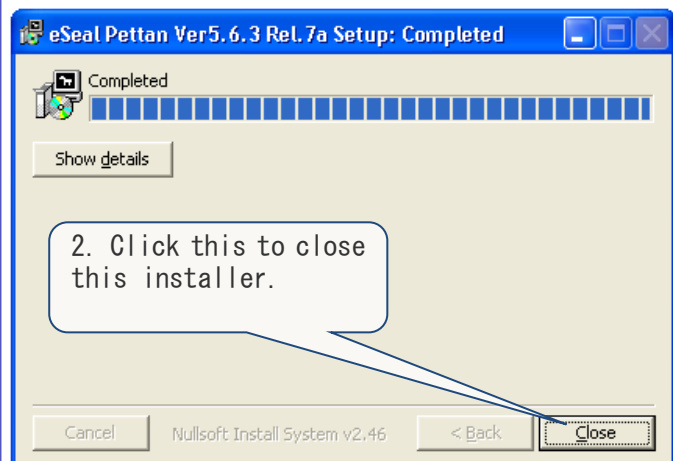
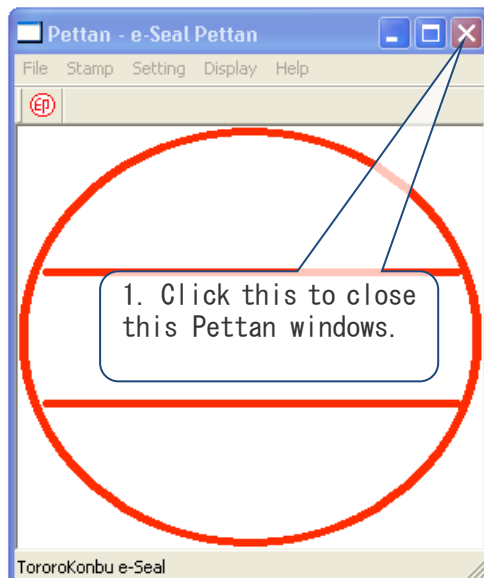
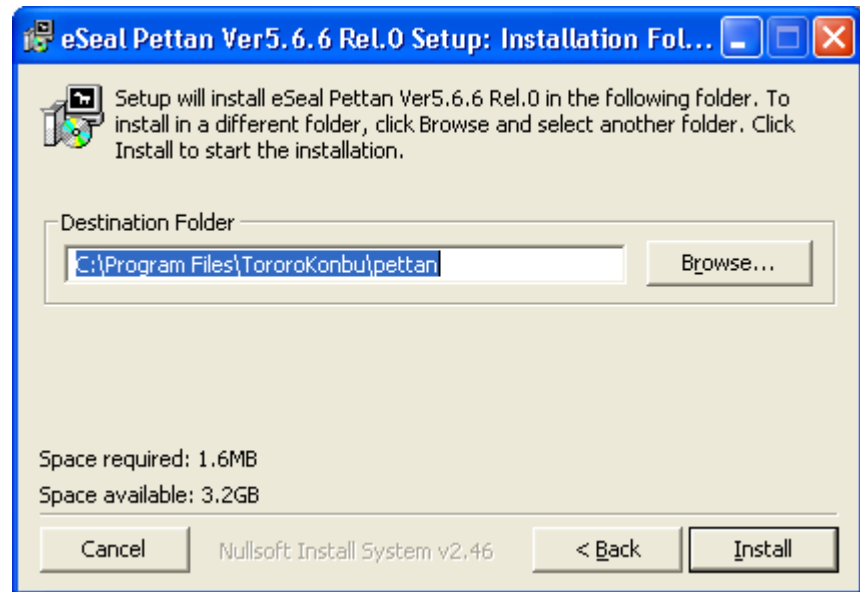
Pettan data (ptdata)	Sample data. It will be installed in MyDocument Folder.
Pettan Seal-tool(Pettan.exe)	Main module (Seal tool) Pettanin.exe. It will be installed in the install folder.
Pettan Manager(Pettanmgr.exe)	Pettan manager ptmgr.exe. It will be installed in the install folder.
Check Log	Log check tool (checklog.exe). It will be installed in the install folder.

Step4)

Specify install folder.

Usually default is OK.

Click the button "Install".

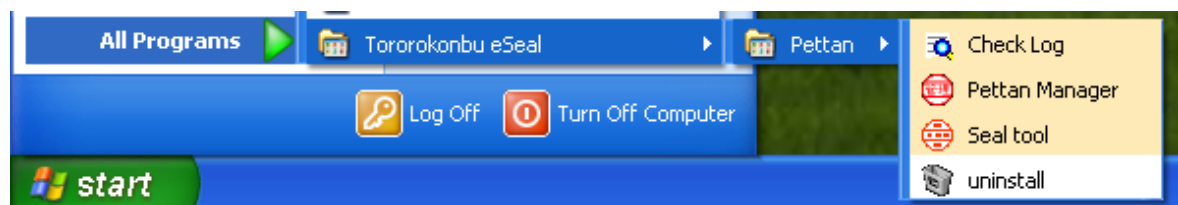


A Pettan window will open. Please close it.

The installation finished if "Completed" is displayed.  
Click the button "Close".

Check the Start Menu for eSeal Pettan.

The following case is Windows XP.



## 2-3. Install of Word and Excel addin Macro for e-Seal menu

Please download the sealing menu for Word and Excel from the following site, and install an English-language edition.

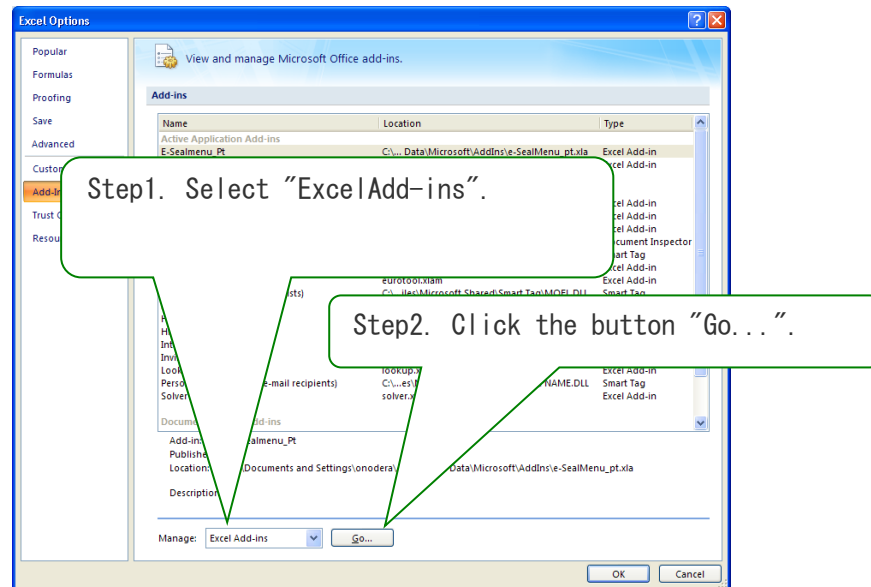
SealMenu for Word

[http://www.tororokonbu.jp/hanko\\_wordmenubar.html](http://www.tororokonbu.jp/hanko_wordmenubar.html)

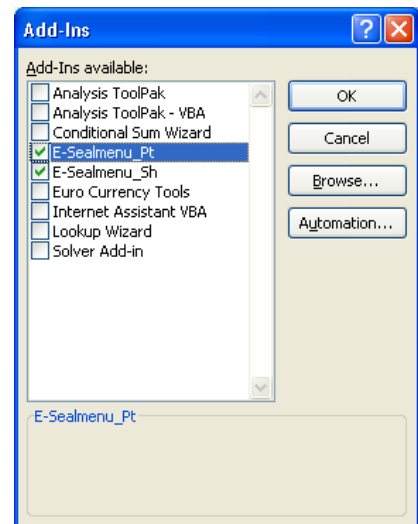
SealMenu for Excel 押印メニュー

[http://www.tororokonbu.jp/hanko\\_excelmenubar.html](http://www.tororokonbu.jp/hanko_excelmenubar.html)

## Excel Setting



Check Add-in "E-Sealmenu64\_Sh"  
or "E-Sealmenu\_Sh"



End

TororoKonbu System